

Acta Crystallographica Section E

Structure Reports

Online

ISSN 1600-5368

2-(3,4,5-Trimethoxyphenyl)-1H-benzimidazole

Aliakbar Dehno Khalaji,^a Fangfang Jian,^b Hailian Xiao^b and William T. A. Harrison^{c*}

^aDepartment of Science, Gorgan University of Agricultural Sciences and Natural Resources, Gorgan 49189-43464, Iran, ^bNew Materials and Function Coordination Chemistry Laboratory, Qingdao University of Science and Technology, Qingdao 266042, People's Republic of China, and ^cDepartment of Chemistry, University of Aberdeen, Meston Walk, Aberdeen AB24 3UE, Scotland
Correspondence e-mail: w.harrison@abdn.ac.uk

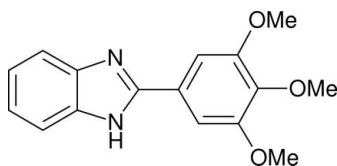
Received 29 April 2008; accepted 12 May 2008

Key indicators: single-crystal X-ray study; $T = 295$ K; mean $\sigma(\text{C}-\text{C}) = 0.005$ Å; R factor = 0.052; wR factor = 0.144; data-to-parameter ratio = 14.4.

In the title compound, $\text{C}_{16}\text{H}_{16}\text{N}_2\text{O}_3$, the dihedral angle between the mean planes of the aromatic ring systems is $30.90(15)^\circ$. In the crystal structure, the molecules form [010] chains by way of $\text{N}-\text{H}\cdots\text{N}$ hydrogen bonds.

Related literature

For a related structure, see: Rashid *et al.* (2007). For background, see: Gupta *et al.* (2004). For reference structural data, see: Allen *et al.* (1987).



Experimental

Crystal data

$\text{C}_{16}\text{H}_{16}\text{N}_2\text{O}_3$
 $M_r = 284.31$

Orthorhombic, $Pbca$
 $a = 8.2270(16)$ Å

$b = 9.5750(19)$ Å
 $c = 37.375(7)$ Å
 $V = 2944.2(10)$ Å³
 $Z = 8$

Mo $K\alpha$ radiation
 $\mu = 0.09$ mm⁻¹
 $T = 295(2)$ K
 $0.25 \times 0.20 \times 0.18$ mm

Data collection

Enraf-Nonius CAD-4 diffractometer
Absorption correction: none
5421 measured reflections
2733 independent reflections

960 reflections with $I > 2\sigma(I)$
 $R_{\text{int}} = 0.085$
3 standard reflections every 100 reflections
intensity decay: none

Refinement

$R[F^2 > 2\sigma(F^2)] = 0.051$
 $wR(F^2) = 0.143$
 $S = 0.94$
2733 reflections

190 parameters
H-atom parameters constrained
 $\Delta\rho_{\text{max}} = 0.21$ e Å⁻³
 $\Delta\rho_{\text{min}} = -0.20$ e Å⁻³

Table 1

Hydrogen-bond geometry (Å, °).

$D-H\cdots A$	$D-H$	$H\cdots A$	$D\cdots A$	$D-H\cdots A$
$\text{N1}-\text{H1A}\cdots\text{N2}^i$	0.86	2.07	2.918 (4)	169

Symmetry code: (i) $-x + \frac{3}{2}, y - \frac{1}{2}, z$.

Data collection: *CAD-4 Software* (Enraf-Nonius, 1989); cell refinement: *CAD-4 Software*; data reduction: *NRCVAX* (Gabe *et al.*, 1989); program(s) used to solve structure: *SHELXS97* (Sheldrick, 2008); program(s) used to refine structure: *SHELXL97* (Sheldrick, 2008); molecular graphics: *ORTEP-3* (Farrugia, 1997); software used to prepare material for publication: *SHELXL97*.

Supplementary data and figures for this paper are available from the IUCr electronic archives (Reference: BT2706).

References

- Allen, F. H., Kennard, O., Watson, D. G., Brammer, L., Orpen, A. G. & Taylor, R. (1987). *J. Chem. Soc. Perkin Trans. 2*, pp. S1–19.
Enraf-Nonius (1989). *CAD-4 Software*. Enraf-Nonius, Delft, The Netherlands.
Farrugia, L. J. (1997). *J. Appl. Cryst.* **30**, 565.
Gabe, E. J., Le Page, Y., Charland, J.-P., Lee, F. L. & White, P. S. (1989). *J. Appl. Cryst.* **22**, 384–387.
Gupta, P., Hameed, S. & Jain, R. (2004). *Eur. J. Med. Chem.* **39**, 805–814.
Rashid, N., Tahir, M. K., Kanwal, S., Yusof, N. M. & Yamin, B. M. (2007). *Acta Cryst.* **E63**, o1402–o1403.
Sheldrick, G. M. (2008). *Acta Cryst.* **A64**, 112–122.

supplementary materials

Acta Cryst. (2008). E64, o1093 [doi:10.1107/S1600536808014189]

2-(3,4,5-Trimethoxyphenyl)-1*H*-benzimidazole

A. D. Khalaji, F. Jian, H. Xiao and W. T. A. Harrison

Comment

The title compound, (I), (Fig. 1), complements substituted imidazoles with biological properties (Gupta *et al.*, 2004). The dihedral angle between the N1/N2/C10—C16 and C4—C9 aromatic ring planes in (I) is 30.90 (15)°. This twisting may help to relieve steric strain between H1a and H5a ($H1a \cdots H5a = 2.32 \text{ \AA}$) and a number of related 2-phenyl-1*H*-benzimidazoles show a similar dihedral angle between the adjacent ring planes (Rashid *et al.*, 2007). Atoms C1, C2 and C3 in (I) are displaced from the mean plane of the C4—C9 ring by 1.010 (5) Å, 0.115 (5) Å and 0.257 (4) Å, respectively. Otherwise, the geometry of (I) may be regarded as normal (Allen *et al.*, 1987).

In the crystal of (I), an N—H \cdots N hydrogen bond (Table 1) links the molecules into chains propagating in [010] (Fig. 2). There are no aromatic π - π stacking interactions in (I) as the closest centroid-centroid separation of aromatic rings is greater than 5.11 Å, which contrasts with the situation in 2-(4-fluorophenyl)-1*H*-benzimidazole (Rashid *et al.*, 2007) in which both N—H \cdots N and π - π stacking help to establish the packing.

Experimental

1,2-Phenylenediamine (2 mmol, 216 mg) and 3,4,5-trimethoxybenzaldehyde (2 mmol, 392 mg) were dissolved in methanol (25 ml) at 323 K. The mixture was stirred for 30 min to give a colourless solution. After the solution had been allowed to stand in air for 3 d, colourless blocks of (I) formed, in about 74% yield, on slow evaporation of the solvent at room temperature.

Refinement

The H atoms were geometrically placed (C—H = 0.93–0.96 Å, N—H = 0.86 Å) and refined as riding with $U_{\text{iso}}(\text{H}) = 1.2U_{\text{eq}}(\text{carrier})$ or $1.5U_{\text{eq}}(\text{methyl C})$.

Figures

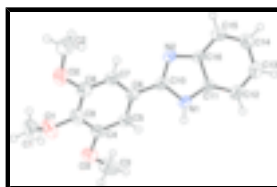


Fig. 1. View of the molecular structure of (I) showing 50% displacement ellipsoids (arbitrary spheres for the H atoms).

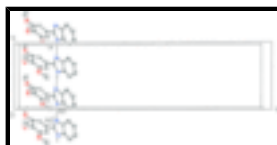


Fig. 2. Fragment of a [010] hydrogen bonded chain of molecules in the crystal of (I). Symmetry code: (i) $3/2 - x, y - 1/2, z$.

2-(3,4,5-Trimethoxyphenyl)-1H-benzimidazole

Crystal data

$C_{16}H_{16}N_2O_3$	$F_{000} = 1200$
$M_r = 284.31$	$D_x = 1.283 \text{ Mg m}^{-3}$
Orthorhombic, <i>Pbca</i>	Mo $K\alpha$ radiation
Hall symbol: -P 2ac 2ab	$\lambda = 0.71073 \text{ \AA}$
$a = 8.2270 (16) \text{ \AA}$	Cell parameters from 25 reflections
$b = 9.5750 (19) \text{ \AA}$	$\theta = 4\text{--}14^\circ$
$c = 37.375 (7) \text{ \AA}$	$\mu = 0.09 \text{ mm}^{-1}$
$V = 2944.2 (10) \text{ \AA}^3$	$T = 295 (2) \text{ K}$
$Z = 8$	Block, colourless
	$0.25 \times 0.20 \times 0.18 \text{ mm}$

Data collection

Enraf-Nonius CAD-4 diffractometer	$R_{\text{int}} = 0.085$
Radiation source: fine-focus sealed tube	$\theta_{\text{max}} = 25.5^\circ$
Monochromator: graphite	$\theta_{\text{min}} = 1.1^\circ$
$T = 295(2) \text{ K}$	$h = -9 \rightarrow 0$
ω scans	$k = -11 \rightarrow 0$
Absorption correction: none	$l = -44 \rightarrow 44$
5421 measured reflections	3 standard reflections
2733 independent reflections	every 100 reflections
960 reflections with $I > 2\sigma(I)$	intensity decay: none

Refinement

Refinement on F^2	Secondary atom site location: difference Fourier map
Least-squares matrix: full	Hydrogen site location: inferred from neighbouring sites
$R[F^2 > 2\sigma(F^2)] = 0.051$	H-atom parameters constrained
$wR(F^2) = 0.143$	$w = 1/[\sigma^2(F_o^2) + (0.0483P)^2]$
$S = 0.94$	where $P = (F_o^2 + 2F_c^2)/3$
2733 reflections	$(\Delta/\sigma)_{\text{max}} < 0.001$
190 parameters	$\Delta\rho_{\text{max}} = 0.21 \text{ e \AA}^{-3}$
Primary atom site location: structure-invariant direct methods	$\Delta\rho_{\text{min}} = -0.20 \text{ e \AA}^{-3}$
	Extinction correction: none

Special details

Geometry. All e.s.d.'s (except the e.s.d. in the dihedral angle between two l.s. planes) are estimated using the full covariance matrix. The cell e.s.d.'s are taken into account individually in the estimation of e.s.d.'s in distances, angles and torsion angles; correlations

between e.s.d.'s in cell parameters are only used when they are defined by crystal symmetry. An approximate (isotropic) treatment of cell e.s.d.'s is used for estimating e.s.d.'s involving l.s. planes.

Refinement. Refinement of F^2 against ALL reflections. The weighted R -factor wR and goodness of fit S are based on F^2 , conventional R -factors R are based on F , with F set to zero for negative F^2 . The threshold expression of $F^2 > \sigma(F^2)$ is used only for calculating R -factors(gt) *etc.* and is not relevant to the choice of reflections for refinement. R -factors based on F^2 are statistically about twice as large as those based on F , and R -factors based on ALL data will be even larger.

Fractional atomic coordinates and isotropic or equivalent isotropic displacement parameters (\AA^2)

	x	y	z	$U_{\text{iso}}^*/U_{\text{eq}}$
O1	1.2012 (3)	0.2286 (3)	0.03723 (7)	0.0646 (9)
O2	0.9428 (3)	0.3940 (3)	0.03507 (7)	0.0591 (9)
O3	1.2638 (3)	0.0641 (3)	0.09566 (8)	0.0609 (8)
N1	0.7160 (3)	0.0683 (3)	0.16552 (8)	0.0387 (8)
H1A	0.7705	-0.0074	0.1623	0.046*
N2	0.6374 (3)	0.2921 (3)	0.15868 (8)	0.0406 (8)
C1	1.3578 (5)	0.2888 (6)	0.04310 (12)	0.0800 (15)
H1B	1.4197	0.2852	0.0213	0.120*
H1C	1.4134	0.2375	0.0615	0.120*
H1D	1.3455	0.3843	0.0505	0.120*
C2	0.8079 (6)	0.4863 (5)	0.03285 (12)	0.0772 (15)
H2B	0.8153	0.5402	0.0112	0.116*
H2C	0.8083	0.5479	0.0531	0.116*
H2D	0.7089	0.4332	0.0327	0.116*
C3	1.3004 (5)	-0.0119 (5)	0.12749 (11)	0.0772 (15)
H3A	1.4032	-0.0581	0.1248	0.116*
H3B	1.2171	-0.0801	0.1317	0.116*
H3C	1.3055	0.0513	0.1474	0.116*
C4	1.1200 (5)	0.1366 (4)	0.09509 (12)	0.0446 (11)
C5	1.0041 (5)	0.1274 (4)	0.12166 (11)	0.0429 (10)
H5A	1.0203	0.0672	0.1409	0.052*
C6	0.8635 (4)	0.2074 (4)	0.11992 (10)	0.0368 (9)
C7	0.8382 (4)	0.2994 (4)	0.09110 (10)	0.0397 (10)
H7A	0.7448	0.3540	0.0901	0.048*
C8	0.9539 (5)	0.3074 (4)	0.06435 (11)	0.0422 (10)
C9	1.0951 (4)	0.2256 (4)	0.06576 (10)	0.0446 (11)
C10	0.7391 (5)	0.1932 (4)	0.14767 (9)	0.0374 (9)
C11	0.5910 (4)	0.0866 (4)	0.18929 (10)	0.0338 (9)
C12	0.5161 (5)	-0.0025 (4)	0.21332 (10)	0.0453 (11)
H12A	0.5493	-0.0948	0.2158	0.054*
C13	0.3906 (5)	0.0513 (4)	0.23340 (11)	0.0532 (11)
H13A	0.3387	-0.0055	0.2500	0.064*
C14	0.3390 (5)	0.1916 (5)	0.22919 (12)	0.0541 (11)
H14A	0.2522	0.2242	0.2428	0.065*
C15	0.4139 (4)	0.2808 (4)	0.20549 (10)	0.0508 (11)
H15A	0.3801	0.3730	0.2031	0.061*
C16	0.5427 (4)	0.2280 (4)	0.18510 (10)	0.0359 (10)

supplementary materials

Atomic displacement parameters (\AA^2)

	U^{11}	U^{22}	U^{33}	U^{12}	U^{13}	U^{23}
O1	0.0561 (19)	0.085 (2)	0.0526 (18)	-0.0022 (18)	0.0156 (16)	-0.0106 (18)
O2	0.061 (2)	0.068 (2)	0.048 (2)	0.0042 (18)	0.0086 (16)	0.0139 (18)
O3	0.0506 (18)	0.0599 (19)	0.072 (2)	0.0141 (17)	0.0108 (18)	0.0009 (18)
N1	0.0409 (19)	0.0233 (17)	0.052 (2)	0.0028 (16)	0.0007 (18)	0.0074 (17)
N2	0.044 (2)	0.0254 (17)	0.052 (2)	-0.0002 (18)	0.0067 (17)	-0.0009 (19)
C1	0.059 (3)	0.100 (4)	0.081 (3)	-0.011 (3)	0.019 (3)	-0.009 (3)
C2	0.085 (4)	0.074 (3)	0.073 (4)	0.019 (3)	0.007 (3)	0.029 (3)
C3	0.067 (3)	0.096 (4)	0.069 (3)	0.034 (3)	-0.013 (3)	-0.004 (3)
C4	0.034 (2)	0.042 (3)	0.057 (3)	0.004 (2)	0.004 (2)	-0.008 (2)
C5	0.042 (2)	0.031 (2)	0.056 (3)	-0.001 (2)	0.005 (2)	0.002 (2)
C6	0.038 (2)	0.030 (2)	0.042 (2)	-0.002 (2)	0.005 (2)	-0.001 (2)
C7	0.036 (2)	0.032 (2)	0.051 (3)	0.000 (2)	0.002 (2)	-0.003 (2)
C8	0.045 (3)	0.042 (2)	0.040 (2)	-0.003 (2)	-0.001 (2)	-0.003 (2)
C9	0.041 (3)	0.053 (3)	0.040 (2)	-0.006 (2)	0.007 (2)	-0.004 (2)
C10	0.038 (2)	0.027 (2)	0.047 (2)	-0.003 (2)	-0.006 (2)	0.003 (2)
C11	0.033 (2)	0.030 (2)	0.038 (2)	-0.0061 (18)	0.005 (2)	-0.003 (2)
C12	0.047 (3)	0.034 (2)	0.054 (3)	-0.007 (2)	-0.002 (2)	0.006 (2)
C13	0.054 (3)	0.053 (3)	0.053 (3)	-0.010 (2)	0.005 (2)	0.010 (3)
C14	0.050 (3)	0.051 (3)	0.062 (3)	-0.002 (3)	0.017 (2)	-0.005 (3)
C15	0.052 (3)	0.037 (3)	0.064 (3)	0.008 (2)	0.012 (2)	-0.004 (2)
C16	0.040 (2)	0.023 (2)	0.044 (2)	-0.0011 (19)	0.001 (2)	-0.001 (2)

Geometric parameters (\AA , $^\circ$)

C9—O1	1.379 (4)	C4—C5	1.379 (5)
C1—O1	1.428 (5)	C4—C9	1.403 (5)
C8—O2	1.377 (4)	C5—C6	1.389 (5)
C2—O2	1.422 (4)	C5—H5A	0.9300
C4—O3	1.372 (4)	C6—C7	1.407 (5)
C3—O3	1.427 (4)	C6—C10	1.464 (5)
N1—C11	1.371 (4)	C7—C8	1.383 (5)
N1—C10	1.383 (4)	C7—H7A	0.9300
N1—H1A	0.8600	C8—C9	1.401 (5)
N2—C10	1.329 (4)	C11—C12	1.383 (5)
N2—C16	1.400 (4)	C11—C16	1.419 (5)
C1—H1B	0.9600	C12—C13	1.376 (5)
C1—H1C	0.9600	C12—H12A	0.9300
C1—H1D	0.9600	C13—C14	1.418 (5)
C2—H2B	0.9600	C13—H13A	0.9300
C2—H2C	0.9600	C14—C15	1.376 (5)
C2—H2D	0.9600	C14—H14A	0.9300
C3—H3A	0.9600	C15—C16	1.400 (5)
C3—H3B	0.9600	C15—H15A	0.9300
C3—H3C	0.9600		

C9—O1—C1	117.4 (3)	C5—C6—C10	119.9 (4)
C8—O2—C2	118.2 (3)	C7—C6—C10	119.8 (3)
C4—O3—C3	116.9 (3)	C8—C7—C6	119.1 (4)
C11—N1—C10	107.7 (3)	C8—C7—H7A	120.5
C11—N1—H1A	126.1	C6—C7—H7A	120.5
C10—N1—H1A	126.1	O2—C8—C7	124.2 (4)
C10—N2—C16	104.8 (3)	O2—C8—C9	114.9 (4)
O1—C1—H1B	109.5	C7—C8—C9	120.8 (4)
O1—C1—H1C	109.5	O1—C9—C8	118.9 (4)
H1B—C1—H1C	109.5	O1—C9—C4	121.6 (4)
O1—C1—H1D	109.5	C8—C9—C4	119.3 (4)
H1B—C1—H1D	109.5	N2—C10—N1	112.4 (3)
H1C—C1—H1D	109.5	N2—C10—C6	126.4 (3)
O2—C2—H2B	109.5	N1—C10—C6	121.2 (3)
O2—C2—H2C	109.5	N1—C11—C12	132.5 (4)
H2B—C2—H2C	109.5	N1—C11—C16	105.1 (3)
O2—C2—H2D	109.5	C12—C11—C16	122.4 (4)
H2B—C2—H2D	109.5	C13—C12—C11	117.2 (4)
H2C—C2—H2D	109.5	C13—C12—H12A	121.4
O3—C3—H3A	109.5	C11—C12—H12A	121.4
O3—C3—H3B	109.5	C12—C13—C14	121.3 (4)
H3A—C3—H3B	109.5	C12—C13—H13A	119.4
O3—C3—H3C	109.5	C14—C13—H13A	119.4
H3A—C3—H3C	109.5	C15—C14—C13	121.7 (4)
H3B—C3—H3C	109.5	C15—C14—H14A	119.2
O3—C4—C5	123.5 (4)	C13—C14—H14A	119.2
O3—C4—C9	116.4 (4)	C14—C15—C16	117.7 (4)
C5—C4—C9	120.0 (4)	C14—C15—H15A	121.1
C4—C5—C6	120.4 (4)	C16—C15—H15A	121.1
C4—C5—H5A	119.8	N2—C16—C15	130.3 (3)
C6—C5—H5A	119.8	N2—C16—C11	109.9 (3)
C5—C6—C7	120.3 (3)	C15—C16—C11	119.8 (4)

Hydrogen-bond geometry (Å, °)

<i>D</i> —H... <i>A</i>	<i>D</i> —H	H... <i>A</i>	<i>D</i> ... <i>A</i>	<i>D</i> —H... <i>A</i>
N1—H1A...N2 ⁱ	0.86	2.07	2.918 (4)	169

Symmetry codes: (i) $-x+3/2, y-1/2, z$.

Fig. 1

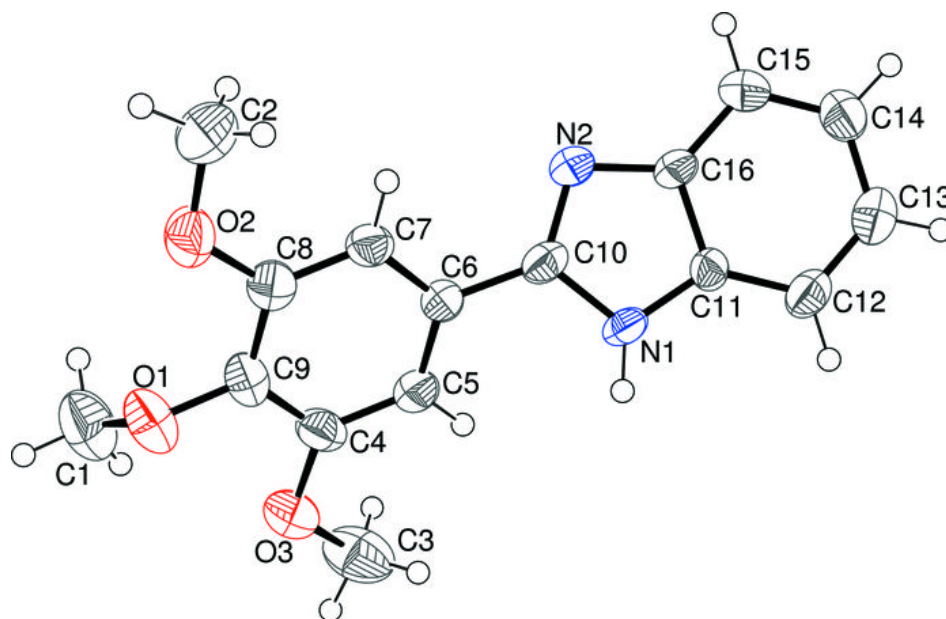


Fig. 2

